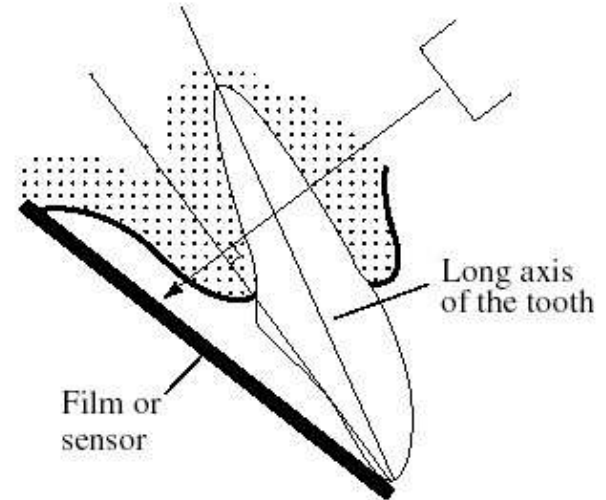


PLANMECA



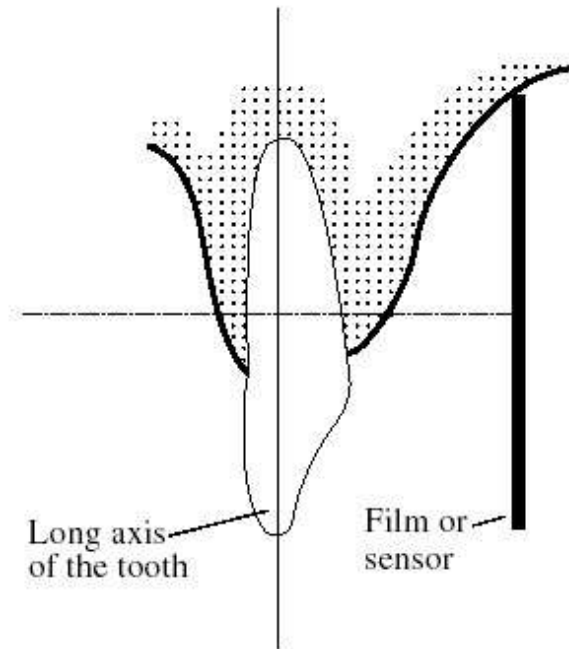
Planmeca Intra

Bisecting angle technique



- Patient holds the film or sensor with his finger
- Short cone
 - magnified apexes

Parallel technique



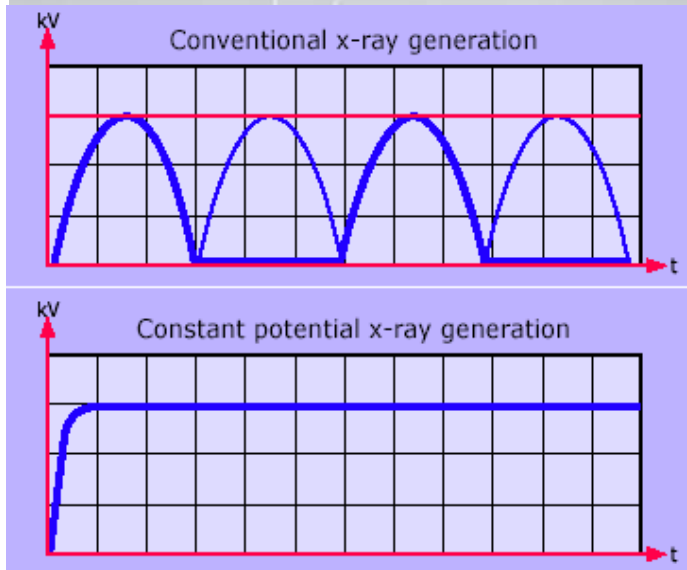
- Film/sensor holder
- Long cone

Image quality

- Small focal spot 0.7mm
 - > small unsharpness
- Optional long cone
 - small unsharpness
- Geometric requirements for good images are met



Image quality



- High-voltage generator
 - Constant potential (DC) X-ray generation
 - High operating frequency (66 kHz)
-
- 25% less radiation to patient compared to conventional AC generators
 - Shorter exposure times
 - Improved contrast
 - Is not affected by line voltage variations
 - Readiness for digital systems

Kilovolts and image quality



50 kV



60 kV



70 kV

Lower anode voltage

- higher contrast, more suitable for endodontic, apex and bone structure diagnosis

Medium anode voltages

- boarder grey scale, suitable for caries detection

Higher anode voltages

- longest grey scale spectrum for periodontal disease diagnosis

Milliamperes and image quality

With variable milliamperes (2 - 8 mA) we can take the whole advantage of the modern digital imaging systems and new high-speed films.



Adjustable settings

- adjustable kV setting (50, 53, 55, 57, 60, 63, 66, 70)
- different diagnostic needs are fulfilled
- adjustable mA (2-8 mA)
- maximum dose reduction possible with modern digital sensor systems and high-speed films



X-ray arm



- smooth movements
- drift-free positioning
- no vibrations
 - easy, quick and accurate positioning



PLANMECA

X-ray Tube design



- non-symmetric form
- tubehead and cone have a common smooth plane
 - easy targeting along the smooth surface
 - close to the patient's chest in occlusal images

Controls

66 pre-programmed quick settings

- modality selection to choose film, imaging plate or sensor
- density setting
- adult/child selection
- periapicals for different teeth
- occlusal
- bite-wing / endo

- Quick setting allow ALWAYS to have right exposure values for individual cases



Control panel options



- hand held control panel
- remote exposure station
 - all controls easily at hand for exposure



Standard wall-mount

- 4 extension arm lengths
- reach 1525 – 1975 mm
- special lengths available with custom order up to 2300 mm



Other mounting alternatives



- dental unit mount
- mobile base mount



Other mounting alternatives



- ceiling mount
- ceiling mount with operating light
- floor column mount
- single stud mount
- pass-through mount



The End

More information:

Erkki Hiltunen

Product Manager, X-rays

tel: +358 20 7795 456

erkki.hiltunen@planmeca.com

Mark Niemi

Product Manager, X-rays

tel: +358 20 7795 743

mark.niemi@planmeca.com

More information:

Osku Sundqvist

Product Manager, Software

tel: +358 20 7795 793

osku.sundqvist@planmeca.com